



Zekelman *Industries*

YOUR **DESIGN-BUILD** PARTNER

PIPE PILING • HOLLOW STRUCTURAL SECTIONS (HSS) • ELECTRICAL CONDUIT
STANDARD PIPE • FIRE SPRINKLER PIPE • FENCE FRAMEWORK • MODULAR CONSTRUCTION

From the Piling to the Penthouse

Depend on Zekelman Industries as your single source for all your tubular steel products — delivered when and where you need them — for industrial, commercial, infrastructure and modular construction. As North America's largest independent steel pipe and tube manufacturer, we can accommodate any design-build supply requirement. Complete customization. Made in America standards. Flexible delivery options. Quick turns. Mixed loads. **Build a better tomorrow — with Zekelman Industries.**

Legacy of Success

Rest assured, Zekelman Industries products will perform. They are trusted in structures across North America:

- Manufacturing facilities
- Chemical and food processing plants
- Energy/utilities
- Water treatment facilities
- Multi-dwelling/mixed-use structures
- Warehouses
- Big-box retail stores
- Office buildings
- Health care facilities
- Data centers
- Infrastructure
- Stadiums
- Airports
- Parking structures

Quality You Can Trust

Quality manufacturing processes:

- ISO 9001 certified facilities
- State-of-the-art product and testing equipment
- Mill testing and documentation (MTRs)
- Full product and steel traceability

Support for Your Project

The technical insights you need:

- Structural engineers
- Geotechnical engineers
- In-house metallurgists

Services to Meet Your Needs

Quick-turn customization:

- In-house galvanization (in-line and hot-dip)
- Custom lengths
- Threading and other finishing services
- Logistics support and job site delivery

Get the support you need for your design-build projects.

Contact Jelani Rucker, vice president of marketing and business development:

jelani.rucker@zekelman.com | 312.275.1626



Zekelman Industries' operating divisions manufacture steel pipe and tubing in a broad size range for all the key stages of construction — from foundation and structural support to MEP, life safety and security.

Atlas Pipe Piles

ASTM A252, A500, CSA G40.21

Straight-seam Electric Resistance Weld (ERW) Pipe Piling

Atlas Tube manufactures the strongest and most reliable steel piles in the industry: **Atlas Pipe Piles.**

Why Use Straight-seam ERW?

More cost-effective than H-piles

- Fewer piles required — each one supports higher load (30% more skin friction)
- Lower labor costs — team will drive fewer piles, and they drive straighter
- Lower material costs — with less piling required, you will buy less steel

Faster installation than spiral-weld piles

- Readily available — manufactured 12 times faster
- Better drivability — 30% less weld per foot
- Less fit-up time in the field

Quality

Comprehensive testing on each order with full MTR documentation:

- Complete heat traceability
- Chemical analysis
- Tensile properties
- Charpy impact testing

Applications

- Friction and load-bearing geotechnical applications
- End-bearing applications
- Bridges and other structures
- Private, civil and government projects

Product Specifications

- **Size range: 1.900–20" OD**
- ASTM A252, A500, CSA G40.21
- Custom lengths up to 120'
- High-strength low-alloy (HSLA), copper-bearing, weathering steels and other special steel grades also available

Advantages

Higher allowable loads, enabling:

- More cost-effective foundation designs
- Reduced pile-cap costs
- Lower construction control costs





Resources

Expertise

- Structural engineers
- Geotechnical engineers
- In-house metallurgists

Services

- Fabrication, including beveling, welding, and shoe and point attachment
- Full traceability in compliance with ARRA
- Quality testing
- Storage
- Logistics and delivery support
- Shortest lead times in the industry

Tools

- Atlas Pipe Piles Catalog (iPad® app)

Stay Connected

- atlaspipepiles.com
- Twitter: @AtlasTube



ASTM A1085, A500 and CSA G40

Hollow Structural Sections (HSS)

Atlas Tube is the largest manufacturer of steel tube for structural elements in buildings, bridges and other structures. We offer the widest size range of HSS — up to 22" square and including Atlas-exclusive 14" and 16" sizes.

Why Use HSS?

- Higher strength-to-weight ratios
- Greater design properties in both axes
- Less resistance to air and water flow
- More aesthetically pleasing
- Enclosed web for use in clean room environments
- Easier and less costly to paint and maintain

Applications

- Buildings
- Bridges
- Towers
- Cranes
- Sign supports and poles
- Off-shore production and drilling platforms
- Roll-over protective structures (ROPS)
- Falling object protective structures (FOPS)
- Amusement rides

Atlas Jumbo HSS

- Ideal for heavy column loads or tall columns
- Fit long spans
- Approved for use in seismic zones
- Available in sizes 18–22" square

Product Specifications

- **Size range: 1.0–22" OD**
- Wall thickness: 0.083–0.875
- ASTM A1085, A500, CSA G40
- Shapes — rounds, squares and rectangles
- 50 or 60 ksi minimum yield strength; 70 ksi maximum (A1085)
- High-strength low-alloy (HSLA), copper-bearing and other special grades of steels are also available for unique design-build projects
- Epox Z Kote® coating for aesthetic applications

Advantages

- Exceptional strength and toughness
- High formability
- High resistance to torsional loading
- Corrosion and fire resistance
- No warping, twisting, splitting, swelling or shrinking





Resources

Expertise

- Lunch & Learns—NCSEA-certified for CE credits
- Structural engineers
- Geotechnical engineers
- In-house metallurgists

Services

- ID flash removal
- Bandsaw and lathe cutting, welding, punching, sizing, bending, slotting and beveling
- Quality testing
- Logistics and delivery support
- Shortest lead times in the industry

Tools

- *Designing with HSS* video series

Stay Connected

- atlastube.com
- Twitter: @AtlasTube



UL® Listed and CSA Certified

Electrical Conduit

Zekelman Industries provides the most comprehensive range of steel electrical conduit and EMT products through two operating divisions. Wheatland Tube's locations span from Pennsylvania to Chicago, and Western Tube is concentrated on the West Coast. Together, the divisions serve customers across the continent.



Wheatland Tube's Featured Products

SpeedCouple Pre-installed Swivel Coupling

Turn SpeedCouple, Not the Conduit or Elbows

The engineered steel factory-installed SpeedCouple swivel coupling connects in as little as half the time of conventional couplings. Available on 10' and 20' DuraGuard™ rigid steel conduit, IMC and elbows.

SmartSet™ EMT with Built-in Set Screw Coupling

The Smart Way to RacewaySM

Available in 10' and 20' lengths and 9 vivid colors, every piece of SmartSet EMT comes with a built-in set screw coupling, saving you time and money on every job. With SmartSet, you don't have to purchase, inventory and install separate couplings.

20' EMT and Rigid Metal Conduit

Faster, Lower-cost Installation

Ideal for long runs, our exclusive 20' EMT and DuraGuard rigid metal conduit eliminate 50% of the connections used for each run. Fewer connections results in faster, lower-cost installations, compared to standard 10' conduit.

Color Check™ EMT

Easy Identification

Available in 9 vivid colors, Color Check EMT enables on-the-spot identification of critical circuits such as fire, alarm, health care, and high- and low-voltage systems.



Western Tube's Featured Products

Designer Series™ Color EMT

For standing out or blending in

Available in 9 vivid colors, Designer Series Color EMT makes it easy to differentiate critical systems, as well as to minimize the visual disruption of raceways in spaces where aesthetics matter.

Conduit Kits

EMT with the only pre-attached, removable coupling

Our EMT comes with a pre-attached coupling that can easily be removed from leftover pieces for reassembly — minimizing material costs. The kits are available with set screw and compression couplings.

Applications

- Circuit protection for low, medium and high voltages

Product Specifications

Electrical Metallic Tubing (EMT)

- **Trade sizes ½–4**
- Available in 5', 10' and 20' lengths
- 9 vivid colors

Rigid Metal Conduit (RMC)

- **Trade sizes ½–6 (20' lengths available in trade sizes 2–6)**
- Available in 10' and 20' lengths
- 9 vivid colors

Intermediate Metal Conduit (IMC)

- **Trade sizes ½–4**
- Available in 10' lengths

Elbows, Couplings and Nipples (EC&N):

- **Rigid/IMC and EMT available in trade sizes ½–6**
- Special large radius 90° available in trade sizes 1–6, steel or aluminum



Resources

Expertise

- Codes and standards

Services

- Co-loaded job site delivery
- Quality testing
- Logistics and delivery — shortest lead times in the industry

Tools

- Wheatland Electric Catalog iPad® app
- 20' EMT Calc iPhone® app

Stay Connected

Wheatland Tube

- wheatland.com
- *The Wheatland Standard* blog: wheatland.com/blog
- Twitter: @WheatlandTube

Western Tube

- westerntube.com
- Twitter: @WesternTube



Modular Construction Products and Services

Z Modular™ construction systems deliver the best-in-class materials and reliable support to reach new heights in modular construction. Our VectorBloc™ system forms strong modular frameworks that join to create buildings of virtually any form factor. And our construction and material production resources provide support every step of the way, from initial design and engineering to final outfitting and construction.

Why Use Z Modular?

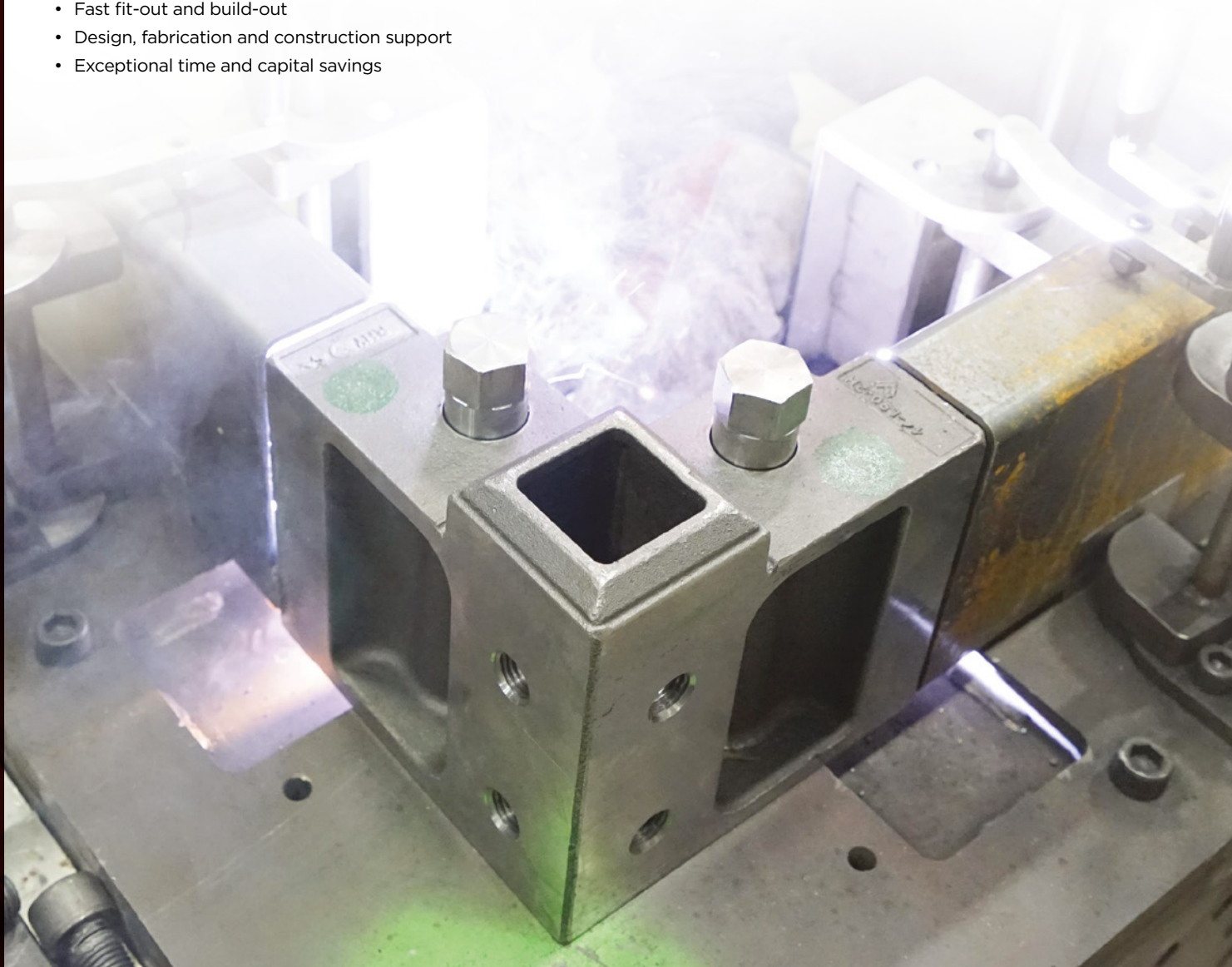
- Build taller than ever—over 30 stories—with strong, uniform modules made from high-quality materials
- Improve safety with noncombustible materials and enhanced seismic performance
- Streamline processes with fast, low-cost access to all materials
- Complete site work during module construction for 50% faster project completion
- Go green by utilizing recycled steel cut to length right from the mill

Advantages

- Fast fit-out and build-out
- Design, fabrication and construction support
- Exceptional time and capital savings

Applications

- Multifamily and residential buildings
- Data centers
- Low- and high-rise commercial buildings
- Hotels and dormitories
- Hospitals and clinics
- Energy and chemical facilities





Resources

Expertise

- Inventor Julian Bowron, with 30 years of construction experience
- Structural engineers

Services

- Design and engineering support
- Fabrication
- Outfitting and construction

Tools

- Design aids
- Presentations
- Videos

Stay Connected

- z-modular.com
- vectorbloc.com
- Twitter: [@vectorbloc](https://twitter.com/vectorbloc)



ASTM A53

Standard Pipe

Wheatland Tube is North America's only full-line producer of A53 continuous weld and electric resistance weld (ERW) standard steel pipe. We offer an industry-leading size range from ¼-18 NPS, and we set the world's standard for hot-dip galvanization.

Featured Products

SureThread™ Standard Pipe

Easy Machinability

A53 Type F, Grade A, Schedules 40 and 80

The uniform grain structure of SureThread continuous weld standard pipe delivers exceptional strength and allows for easy threading, bending and cutting — making installation fast. Look for the SureThread stencil!

ERW Standard Pipe

Reliable Strength

Type E, Grade B, Schedule 40

We produce standard pipe using the ERW process. Available in trade sizes ¼-18 NPS.

Advantages

- Largest size range in the industry
- Made in the USA

Applications

- Used for mechanical and pressure applications and for ordinary uses in steam, water, gas and air lines.

Product Specifications

- **Size range: ¼-18 NPS**
- ASTM A53
- Custom lengths
- 350 combinations of finish and end treatments
- NSF-61 certified for use in potable water applications





Resources

Expertise

- Codes and standards

Services

- Quality testing
- Logistics and delivery support
- Shortest lead times in the industry

Tools

- Wheatland Pipe Catalog iPad® app

Stay Connected

- wheatland.com
- *The Wheatland Standard* blog: wheatland.com/blog
- Twitter: [@WheatlandTube](https://twitter.com/WheatlandTube)



ASTM A795, A135, A53, UL Listed, C-UL Listed and FM Listed

Fire Protection Pipe

Wheatland Tube manufactures the industry's most complete line of steel sprinkler pipe. Our coating options set the standard for resistance to exterior corrosion and heat.

Featured Products

Mega-Flow — Greater Hydraulics

With a larger ID than Schedules 10 and 40, our engineered Mega-Flow sprinkler pipe delivers improved hydraulics while fitting standard hangers.

Mega-Thread — Greater Flow

With a larger ID than Schedule 40, our engineered Mega-Thread sprinkler pipe allows for superior flow and can be joined with welding or a broad range of fittings.

Applications

- For wet, dry, preaction and deluge systems

Product Specifications

- Available in 1-8" OD
- Engineered fire sprinkler pipe
- FM Approved and UL, C-UL and FM Listed
- Schedule 10 and Schedule 40
- GL galvanized, light wall, threadable pipe
- MLT black, light wall, threadable pipe
- WST Schedule 5 light wall pipe

Advantages

- Industry-leading hot-dip galvanization
- Superior coating options



Resources

Expertise

- Codes and standards

Services

- Quality testing
- Logistics and delivery support
- Shortest lead times in the industry

Tools

- Wheatland Pipe Catalog iPad® app

Stay Connected

- wheatland.com
- *The Wheatland Standard* blog: wheatland.com/blog
- Twitter: @WheatlandTube

ASTM F1083, F1043

Fence Framework

Wheatland Tube is the only fence framework manufacturer that produces two distinct product types to meet the most stringent specification requirements.

Featured Products

Schedule 40 per ASTM F1083

Wheatland F1083 is the original specified fence framework used for commercial, industrial and high-security applications. Wheatland is the leading supplier of ASTM F1083 full-weight Schedule 40 domestic fence framework.

WT-40 per ASTM F1043, Group 1C

Wheatland Tube certifies that all Wheatland WT-40 pipe is manufactured in the USA and is in compliance with applicable local, state and federal specifications. "WT-40 MADE IN USA" is proudly displayed on each length of WT-40 pipe.

Wheatland WT-40 fence framework meets or exceeds the most demanding specifications and codes imposed by private, independent and government agencies.

Applications

- Heavy industrial
- High security
- Commercial

Product Specifications

- Available in 1 $\frac{3}{8}$ –8 $\frac{5}{8}$ " OD.
- ASTM F1083 Schedule 40
- ASTM F1043 Group 1C WT-40
- WT-20
- WT-15
- Square and rectangular tubing

Advantages

- Triple-layer OD coatings for outstanding corrosion protection



Resources

Expertise

- Codes and standards

Services

- Quality testing
- Logistics and delivery support
- Shortest lead times in the industry

Tools

- Wind Load Calculator (visit wheatland.com)
- Wheatland AEC course (visit aecdaily.com)

Stay Connected

- wheatland.com
- *The Wheatland Standard* blog: wheatland.com/blog
- Twitter: @WheatlandTube



Corporate Office

227 West Monroe Street
Suite 2600
Chicago, IL 60606

312.275.1600
info@zekelman.com
zekelman.com

About Zekelman Industries

Zekelman Industries includes the operating divisions of Atlas Tube, Picoma, Energex Tube, Sharon Tube, Wheatland Tube, Z Modular and Western Tube & Conduit Corporation. It is the largest independent manufacturer of hollow structural sections (HSS) and steel pipe, and the top producer of electrical conduit and elbows, couplings and nipples in North America. Zekelman Industries delivers a broad range of pipe and tube solutions that build its customers' success.

For more information, contact Jelani Rucker at:
312.275.1626 or **jelani.rucker@zekelman.com**
Or, visit our website at zekelman.com